

The spellbinding

Android Cheat Sheet



Android Debug Bridge

Your magic command-line tool of spells to
summon and comand devices.

Connectivity spells



adb start-server

Start the adb server on your computer. Will be executed automatically.

adb kill-server

Close local adb server on your computer.



Connectivity spells

adb connect <ip>

e.g.: adb connect 192.168.0.10

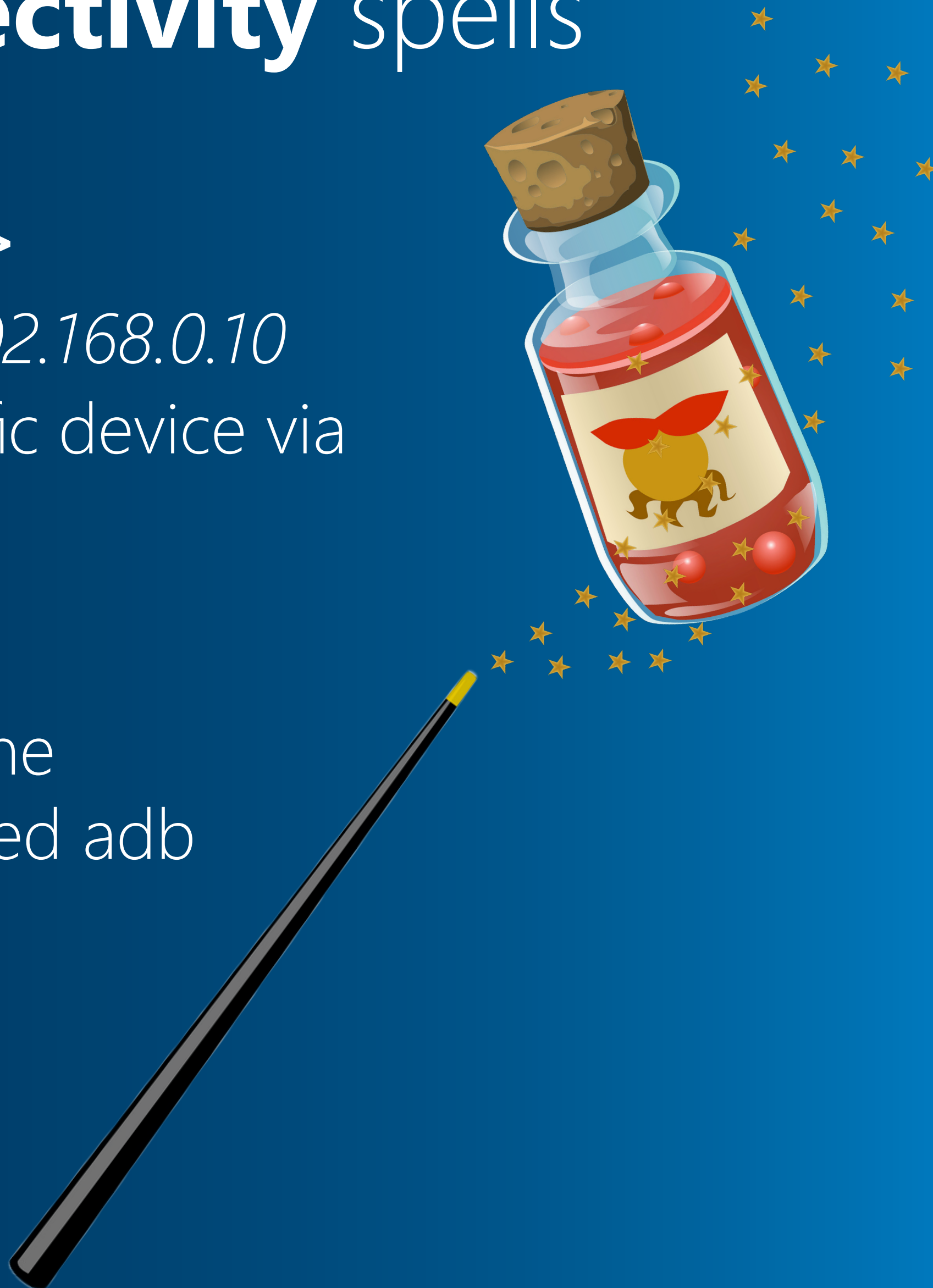
Connect to a specific device via IP or device name

adb devices

Lists all devices in the network with enabled adb

adb disconnect

Disconnect from a specific device.



File handling spells

adb push <local filepath> <device filepath>

e.g.: adb push mybootanimation.zip /oem/media/bootanimation.zip

Transfers a local file from your computer to the specified filepath on the device.

**adb pull <device filepath>
<local filepath>**

Transfers a file from the device to your local computer



APK handling spells



adb install <apk path>

*e.g.: adb install
myapplication.apk*

Installs a local apk on the
connected device

adb uninstall

<packagename>

Uninstalls the specified
package from the device

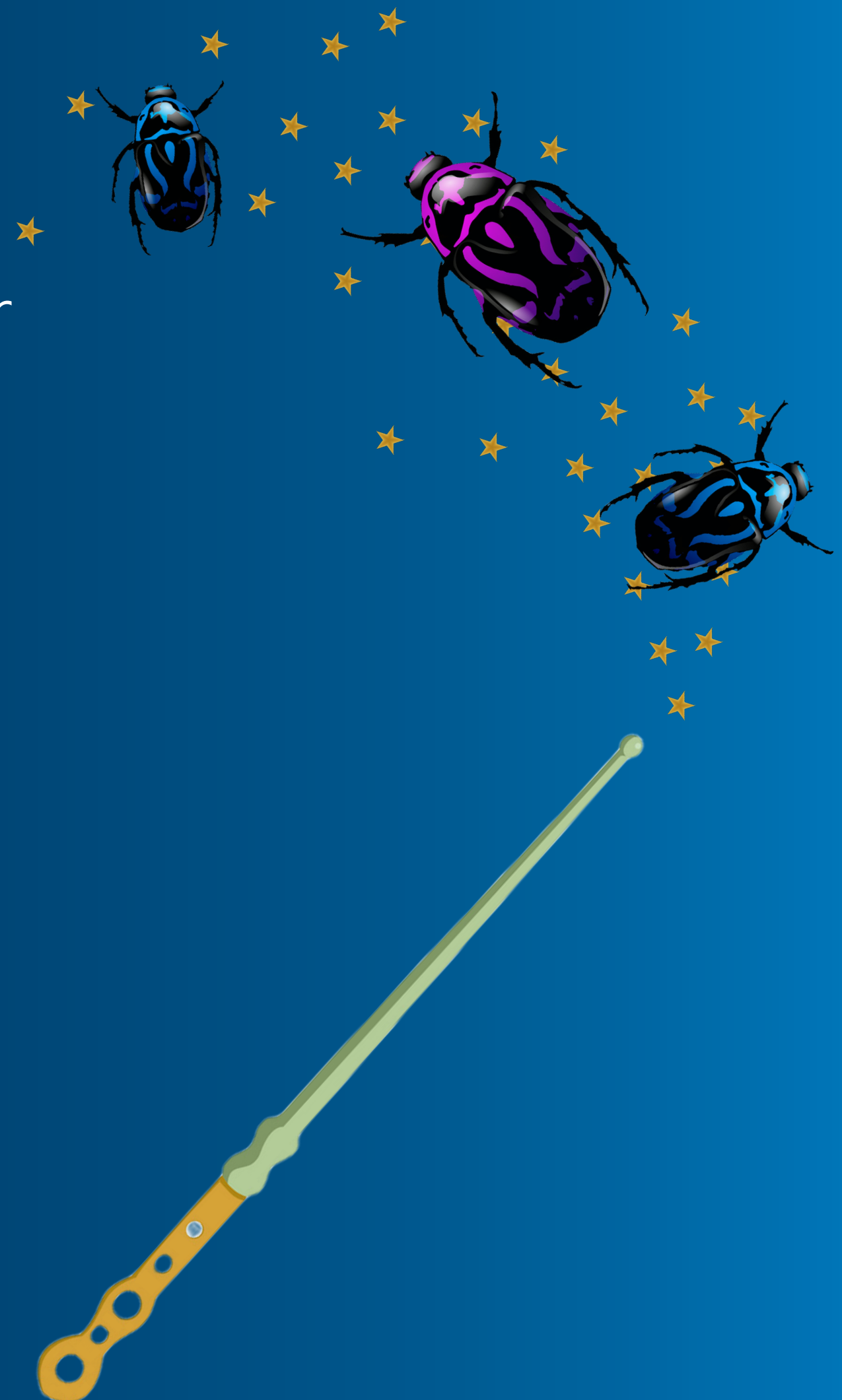
Debugging spells

adb logcat

Prints Android logs in your local shell. Can also be piped into a file.

adb bugreport

Creates a comprehensive bugreport from the connected device and saves it to your computer.



Device handling spells



adb root

Gives you additional right. For example to access the /system partition on the device.



adb remount

Remounts the /system partition to be

Device handling spells

adb reboot

Reboots the connected device.

adb shell

Connects you to the shell of the connected device.



Device shell spells

adb shell input text <any text>

Emulates keystrokes on the device.
No need to type things out on your device. Just copy and paste it into your shell.





Customize, manage and secure your Android with

emteria.com

CONTACT US

sales@emteria.com

